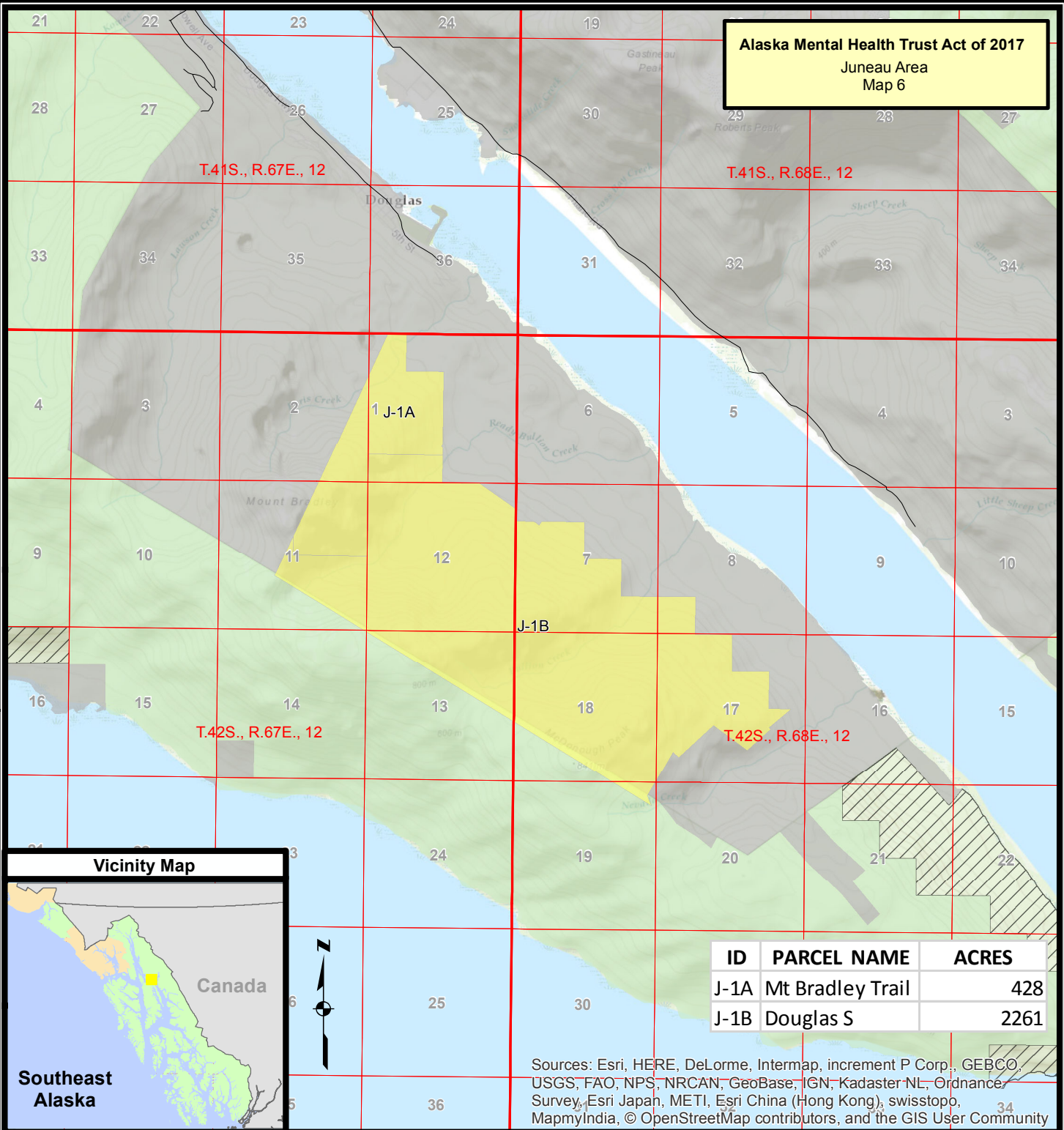
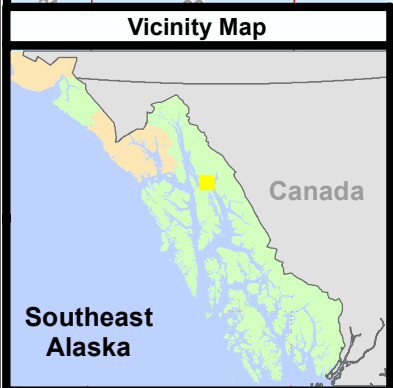


Alaska Mental Health Trust Act of 2017
Juneau Area
Map 6



ID	PARCEL NAME	ACRES
J-1A	Mt Bradley Trail	428
J-1B	Douglas S	2261

Sources: Esri, HERE, DeLorme, Intermap, increment P Corp., GEBCO, USGS, FAO, NPS, NRCAN, GeoBase, IGN, Kadaster NL, Ordnance Survey, Esri Japan, METI, Esri China (Hong Kong), swisstopo, MapmyIndia, © OpenStreetMap contributors, and the GIS User Community



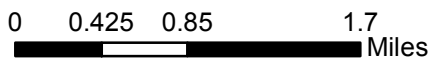
References

Data acquired from a variety of sources of differing accuracy, precision and reliability. Features represented by the data may not represent accurate geographic locations.

Disclaimer

The USDA Forest Service makes no warranty, expressed or implied regarding the data displayed on this map, and reserves the right to correct, update, modify, or replace this information without notification.

- Alaska Mental Health Trust Authority To Be Exchanged
- Surface Ownership**
- State of Alaska
- National Forest System Lands
- Non - National Forest System Lands



Map Creation Date - 09-19-2016
Map Revision Date - 03-03-2017

Sheet 6 of 10

Alaska Mental Health Trust Act of 2017

Legislative Map Bill Numbers: S131 & HR513

Juneau Area
2689 Approximate Acres



U.S. Forest Service - Alaska Region
Tongass National Forest
Alaska At-Large U.S. Congressional District



Copies of this map are available for public inspection in the Office of the Regional Forester, R10, Juneau, Alaska.